

Subject: Housing for Academic Staff of IKU and Co-Housing for Students of IKU

Location: The area to the southeast of IKU Ataköy Campus on nearby Yenibosna Metro Station

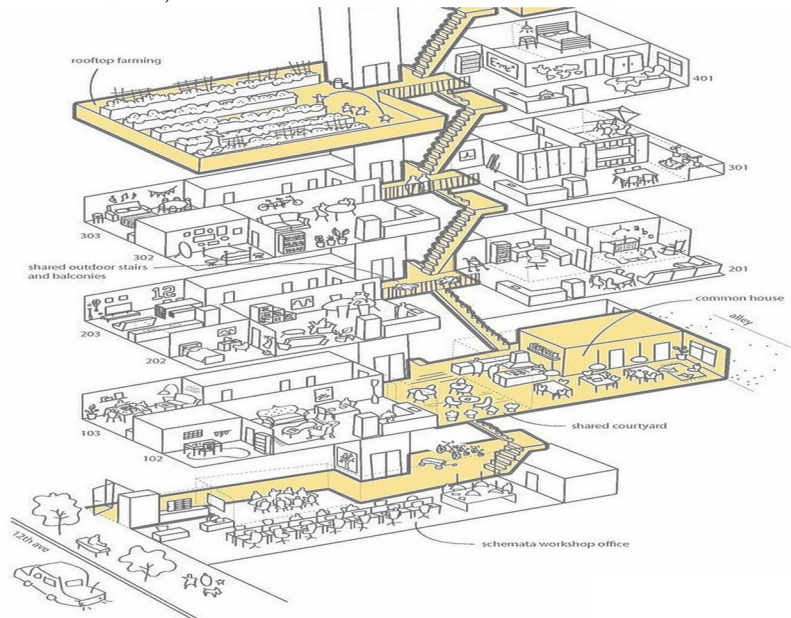


Definition of the Subject:

The project area is located nearby Istanbul Kültür University and surrounded by housing on the north and east, a park on the south and World Trade Center on the southeast. The topic of the studio is designing housing for academic staff of IKU and co-housing for students of IKU.

The objectives of the design studio are defining/interpreting the role of architecture in creating new morphologies in mass housing areas, developing mixed-use settlements with hybrid/mixed typologies, considering the role of open spaces in mass housing areas for recreational and public use and evaluating all of these factors in the design process. The residential settlement is expected to be integrated with its surrounding environment socially as well as spatially.

Architectural design proposals should have a density of 200 people/hectare and include a mixed program of various functions that potential users can benefit from. Mixed-use can be interpreted based upon the analysis of the built environment (geographical, historical, functional, etc.) and the users.



mass housing, co-housing, mixed-use development, hybrid

programs, affordable housing, density, modular systems, diversity of life styles, unit variety, multiple

users, adaptability, social integration, connectivity, accessibility, sustainable design